

v5.2020 Update 5.1 – Finance Release Notes



Contents

- Introduction..... 1**
- New Features 2**
 - Finance..... 2*
 - Base Pay Mapping updated 2
 - Active Financial Year Placement 4
 - Salary Projections updated..... 5
 - Ledger Groups and Codes updated 5
 - Bank Claim Report updated 6
 - Delivery Notes updated..... 6
 - Invoices and Credit Notes Filter options updated 7
- Resolved Issues..... 8**
 - Finance..... 8

Introduction

This document contains an **End User** version of the **Release Notes** for the **Bromcom Finance Software** for **Version 5**. The **Release Notes** contain details of the latest updates, fixes and new features that have been implemented in this release.

An enhancement is either an improvement we have added or a new feature. Some of these are user requested, but most are enhancements we make to improve the software.

This document contains the **Release Notes for v5.2020 Update 5.1** for **July 2020**.

What is an Update?

When an enhancement is requested or an issue is found, the details are sent to the Development Team. Once they have made the enhancement or fixed the issue an update is created. This update can contain one or many fixes, for one or many modules, it is then tested by the Testing team and released either to be included into the next Build, (if there is one imminent), or it is passed as an Update to be deployed by the Support Team who will contact you and arrange a mutually agreeable time to apply the Update. Each of the issues listed here has been fixed with the latest Update.

1. Server side Installers:
 - a. MIS v5.2020.5.1

Please Note: The **Minimum Screen Resolution** that we support is **1280 x 1024**.

We support the following Browsers:

- Google
- Edge
- Safari
- Firefox

We always support the latest version of these Browsers and recommend our Users should always use the latest versions as well.

New Features

Note: All routes are based on the New Bromcom Menu

Finance

Base Pay Mapping updated

Modules > Finance > Staffing > Base Pay Mapping

The table has been re-designed to for a better display. When the page is loaded the list will show all **Base Pays** and **Spine Groups** that are used on one or more **Staff Contracts** that overlap (date wise) with one or more days in the selected **Active Financial Year**. The **Show Unused Base Pay Structures** tick box will show all **Base Pays** and **Spine Groups** that are not used in the selected **Active Financial Year** and the **Select All** tick box will select all entries listed on grid table.

Active Financial Year: 2020

Add Additional View/Edit Clear Map Export Map Import Map Close

Base Pay Mapping

Grid actions Copy CSV PDF Print Select All Show Unused Base Pay structures Search:

Base Pay Structure	Scale Spine Point Group	Cost Centre	Fund	Ledger for Basic	Ledger for NI	Ledger for Superannuation	Default	Other Payment Max Value	Fund for Other	Ledger for Other	Status
Bexley Single Status Agreement-Bexley 2(SIMS)	ALL						No	0.00			Ignored
Bexley Single Status	ALL	Pupil	School	Office Staff	Classroom	Midday Supervisors	Yes	0.00			Partial

Click the **Export Map** button to **Export** the selected rows i.e. **Base Pay** and **Scale Point Group** rows that have partial or mapped status. If rows are selected that are Ignored status, they not added to the **Export** file. Click the **Import Map** button to **Import Base Pay Mapping** from an **External File** or transfer the **Mapping** from last year. Any data that is not valid in the **Import** is ignored and a warning message given at the end of the process.

Export Base Pay Mapping

This will export the base pay mapping for all rows where a mapping has been created (i.e status=Partial or Mapped)

Export All Cancel

Import/Transfer Base Data Mapping

Use this option to import the Base Pay mapping from an external file or transfer the mapping from last year. In all cases, if the mapped cost centre, ledger or fund is not valid in the 2021-2022 financial year, it will be ignored.

☒ Do not overwrite existing mappings
☐ Overwrite existing mappings

Transfer from last year Choose file to import Cancel

To **View** or **Edit** a **Mapping** double click on a row or click on the row to highlight and the **View/Edit** button. This will open the **View/Edit Base Pay Mapping** pop-up.

- **Base Pay Structure** - displays the name of the selected item and cannot be changed
- **Scale Spine Point Group** – displays Scale Spine Point Name and cannot be changed.
- **Cost Centre** - this is selected from the dropdown list
- **Fund** - this is selected from the dropdown list showing funds that are in valid ES type ledger combinations for the selected cost centre.
- **Basic** – this is selected from the dropdown list of Ledgers
- **NI** – this is selected from the dropdown list of Ledgers
- **Superannuation** - this is selected from the dropdown list of Ledgers
- **Set as Default Mapping** – this is a tick box that defaults to Not Selected
- **Other Payment to a Maximum Value of** – this is an entry box with a valid range of 0 or 1 to 10,000.
- **Fund** – this is selected from the dropdown list showing funds that are in valid ES type ledger combinations for the selected cost centre
- **Other Payment** – this is selected from a dropdown list of Ledgers if type ES that are in valid combinations for the selected Cost Centre and Fund

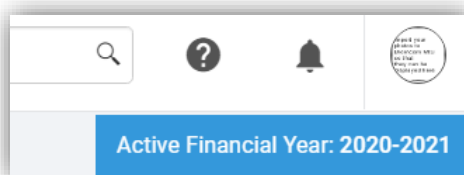
Selecting the **Add Additional** button allows you to insert **Multiple Mappings** for **Multiple Funds** against the same **Base Pay Mapping/Cost Centre** combination, the button will only be active where this is possible. The pop-up is similar to the **View/Edit Base Pay Mapping** pop-up, with the exception of the **Cost Centre** option not being editable.

The **Clear Map** button will only be active when one or more rows have been selected, this will give a **Message**, click either **Clear Map** or **Cancel**.

Active Financial Year Placement

Modules > Finance > All Pages

The **Active Financial Year** button has been moved to the top right of the page, higher than before so it will not impede the content display of the page.



Salary Projections updated

Modules > Finance > Staffing > Salary Projections

Click on the **Base Pay Mapping** button to open the **Base Pay Mapping** page. New fields **Spine Group** and **Spine Point** have been added to show the **Scale Point Group Description** and **Spine Point** and a **Scale Point Group** has been added to the **Base Pay/Spine** column.

Salary Projections

Base Pay Structures

Cost to end of July

Annual Cost	Estimate	Commitment	Actual	Variation	Other Cost
£1,316,284.68	£0.00	£1,314,828.99	£0.00	£0.00	£0.00

Full Year Breakdown

Includes Additional Allowance

Pro Rata

Pay date range

to

Base Pay Structure

Spine Group

Spine Point

Period	Base Pay/Spine	Basic	NI	Super	Total	Commit	Salary Pd	Variation
April 2021		97,433.20	8,963.07	3,294.12	109,690.39	109,690.39	944.52	-108,745.87
May 2021		97,433.20	8,963.07	3,294.12	109,690.39	108,234.70	1,455.69	-108,234.70

Ledger Groups and Codes updated

Modules > Finance > Maintenance > Ledger Groups and Codes > Ledger Codes

The **Ledger Codes** page has been updated, now if an **Expired Fund Code** is linked to that **Ledger**, it will show in the dropdown but will be greyed out so it is a view only record meaning you can see it was linked to that **Fund Code** but that **Fund Code** is no longer active. If an expired **Fund Code** is not linked to that **Ledger**, it will not show in the dropdown against that **Ledger** at all. The **Funds** dropdown should display all linked **Fund Codes** comma separated, regardless of whether they are active or not, the only visual difference is when clicking on the arrow to view the list of **Funds**.

Ledger Codes

Ledger Code

Ledger Description

Ledger Type

Ledger Group

Start Date

End Date

Extended Details

Short Code

Profile

Funds

Bank Claim Report updated

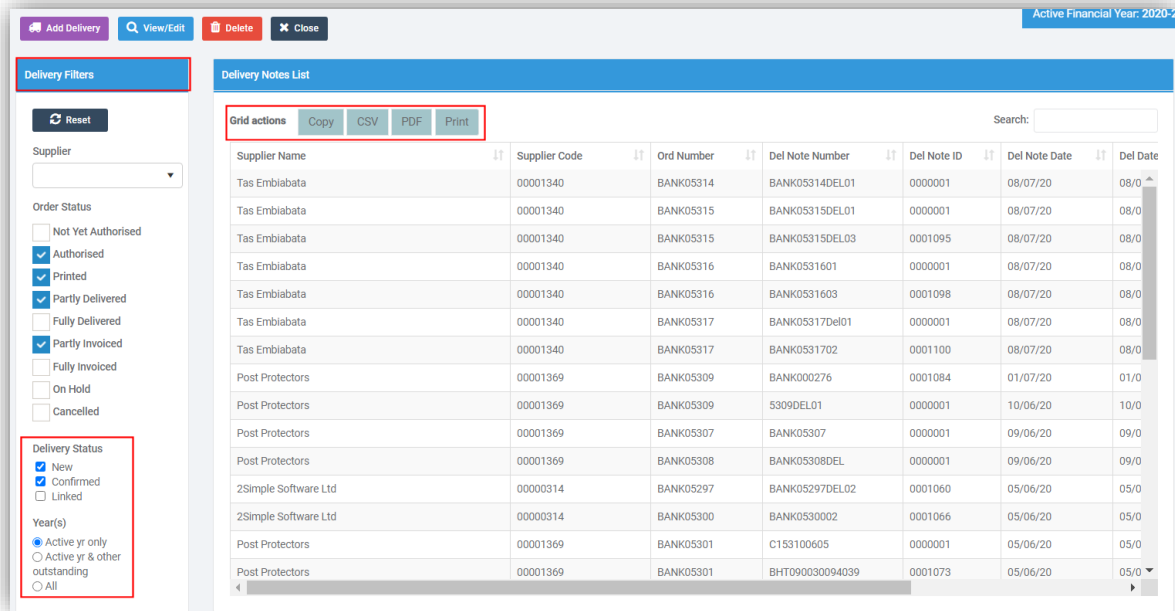
Reports > Finance > Bank Claim

The **Bank Claim** report has been updated and now has an additional section called **Other Bank Ledger Codes**. The **Other Bank Ledger Codes** section is used in combination with **VAT Ledger Codes** and **Breakdown by Ledger Codes** sections to reconcile against the **Bank Ledger Code** section when the report includes **Transactions** that include **Posts** to the selected **Bank** and one or more other **Banks**.

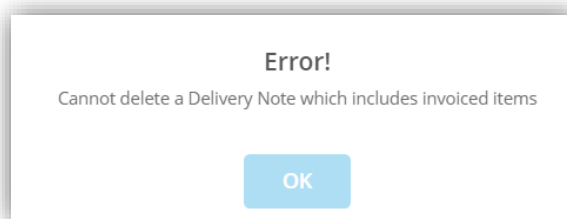
Delivery Notes updated

Modules > Finance > Accounts Payable > Deliveries

There have been several updates made to the page, the **Filter** name has been changed to **Delivery Filters** and two new sections **Years** and **Delivery Status** have been added. **Grid Actions** have also been added.



The **Delete** option has been updated and will give a **Message** if you attempt to **Delete** a **Delivery Note** that is linked to an **Invoice**.



Once a **Delivery Note** is linked to an **Invoice** it becomes **Read Only** and the **Save** and **Record/Edit** buttons will no longer be displayed. If you double click or select and click **View/Edit** to open the **Delivery Note** the **Save** and **Save & Next** buttons will also no longer be displayed as well.

Invoices and Credit Notes Filter options updated

Modules > Finance > Accounts Payable > Invoices & Credit Notes

The **Filter** options have been updated, a **Suppliers** option has been added and the **Filter** panel can now be **Minimised** by clicking the double **Arrow** icon top right and **Maximised** by clicking it again, to give more room on the screen.

The screenshot displays the 'Invoices and Credit Notes' interface. At the top, there is a navigation bar with buttons: 'New' (purple), 'View/Edit' (blue), 'Authorise' (green), 'Cancel/Credit' (red), 'BACS Run' (brown), and 'Cheque Ru' (brown). Below this, the interface is split into two panels. The left panel, titled 'Invoice Filter', contains a 'Reset' button, a 'Supplier' dropdown menu (highlighted with a red box), and an 'Invoice/Credit Status' dropdown menu set to 'Outstanding'. The right panel, titled '> Invoices and Credit Notes', features a 'Select All' checkbox (marked with a red X), 'Grid actions' (Copy, CSV, PDF, Print), and a list of 'Supplier Name' entries, with '1st Aid at Work Training Services' visible. A double arrow icon in the top right of the 'Invoice Filter' panel is highlighted with a red box, indicating the toggle for minimizing/maximizing the panel.

Resolved Issues

Finance

Reference(s)	Affected Area(s)	Issue Description
CAS-130854-X8P8C4	Modules > Finance > Accounts Payable > Invoices & Credit Notes	Cancelling an invoice was not setting the correct VAT value in the cancelled journal
CAS-129001-N4Y0H4	Modules > Finance > Staffing > Salary Calculator	Was not able to create a new contract with entering a payroll number
CAS-131283-B9L4K9 CAS-131309-L7N1S8	End of Year Process	Were given an incorrect error message that purchase orders were still open
CAS-128768-C3Y6T2	Modules > Finance > Accounts Payable > Invoices & Credit Notes > Sundry Invoice	Was not able to enter an invoice number greater than SUNDRY99
CAS-126346-F2C4G2	Modules > Finance > Staffing > Salary Reconciliation	Base Payment option was not visible
CAS-130270-R4C9C9	Reports > Finance > Income & Expenditure Source Analysis	Was not showing the c/f balance
CAS-132323-N7X7J3	Modules Finance > Staffing > Individual Salary Payment	Individual Salary Payment was not appearing on Payroll Control